



# CW-210

---

## Wireless Full HD Network Camera Quick Installation Guide | English



## Preface

---

This manual introduces the function installation and operation of the Wireless Full HD Network camera. Prior to installation and usage, please read the manual thoroughly.

### 1. Warning

- (1) This product can be only used in specified range in order to avoid any damage or danger;
- (2) Don't expose the camera to rain or moisture place
- (3) Don't remove the cover to reduce the risk of electric shock. Refer servicing to qualified personnel.
- (4) Never operate the camera under unqualified temperature , humidity and power supply;
- (5) Please use the soft cloth to clean the camera. Use neuter cleanser if bad smeared .Don't use the strong or cleanser avoiding scuffing.

### 2. Electric Safety

Installation and operation must accord with electric safety standard.

### 3. Caution to transport

Avoid stress,vibration and soakage in transport,storage and installation.

### 4. Polarity of power supply

This product uses DC 5V power supply, power plug Micro USB interface as shown below.



Pic1. Power plug

### 5. Careful of installation

- (1) This series item must put on the smooth desk or platform,and it can not be installed slant ways.
- (2) Don't apply in corrosive liquid,gas or solid environment to avoid the cover which is made up of organic material.
- (3) This product has a heating device inside, please keep ventilated.
- (4) Never power on before installation is completed.

### 6. Don't disassemble discretionarily.

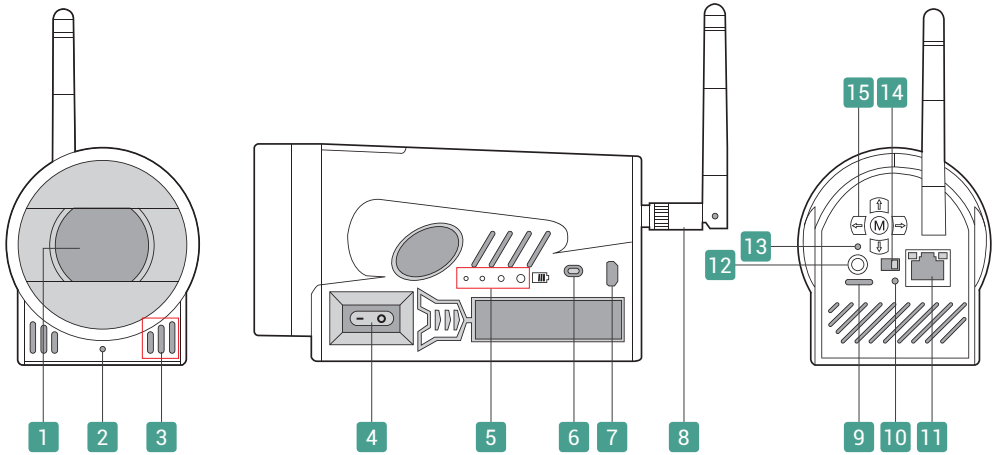
We are not responsible for any unauthorized modification or dismantling.

### 7. Attention

Electromagnetic filed under certain rate may affect camera image!

# Quick Installation Instructions

## 1. Camera interface and button description



Pic 1.1 Product interface

1	Lens	6	Battery status button	11	LAN interface
2	Power indicator	7	Power interface: battery charging interface.	12	Bluetooth pairing button: built-in bluetooth.
3	Audio interface: built-in microphone	8	WiFi Antenna: embedded WiFi module.	13	Bluetooth pairing indicator
4	Power switch	9	SD card slot:support 64G SD card storage.	14	Bluetooth voice and mic voice switch button
5	Battery status indicator	10	Reset button:press 5 seconds to reset	15	Five control buttons: Zoom / Focus settings.

Note: Turn on the power switch, the device can work properly and is powered by battery. Connected to the power supply, the battery is charged while supplying power to the device. Connected to the power supply and turn off the power switch, the device is only charged and does not work.

### Five control buttons :

Up: Zoom out (wide angle)	Down: Zoom in (narrow angle)
Left: Focus+	Right: Focus-
Middle: Back to the initial state (zoom back out, auto focus)	

## 2. Power on

- (1) **Power on** : Turn on the power switch, as pic1.1 No4. (Power switch), and the indicator below the lens lights green. Camera module will stretch. When the module finishes stretching, the self-testing is finished. The device is in normal working status. Connect the network wire to LAN interface (pic1.1 No11.), and the indicator light of LAN interface flashes yellow, indicating the connection is normal.  
Note : The battery status indicator lights at the side of the device are off . Press the battery status view button(pic1.1 No6.) to check the current quantity.
- (2) **Charge** : Turn off the power switch, connected to DC5V power adapter, and power interface (Micro USB) is shown as pic1.1 No7. When one of the battery status indicator lights (pic1.1 No5.) at the side of the device is flashing or all the lights are on(green), the device is charging.  
Note: The power indicator light (green) below the lens is off (pic1.1 No2.).
- (3) **Charging the battery while working**: Turn on the power switch while connected to power adapter, the battery will be charged and the device will be working simultaneously. Note: The power indicator light below the lens and the battery status indicator lights at the side of the device are both on.

## 3. Video output

This product will output video through the network, including wireless and wired networks.

### (1) Wired network output:

- a. **Cable connection**: Connect this product and your computer through network cable, the device LAN interface see pic1.1 No 11.
- b. **Sign in to webpages**: Open the browser, enter 192.168.11.202 (factory default) in the address bar, then to the login page. The device facilitates the users control PTZ cameras, record the video, playback, configuration, etc.

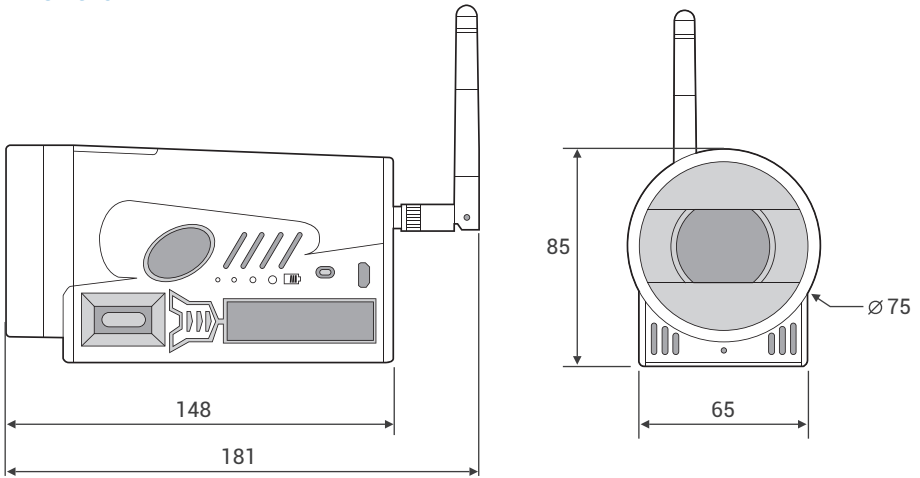
### (2) Wireless network output:

- a. **Wireless network configuration**: Wired network login, First, configure the wireless network in the network configuration, check the network port enable, WiFi hotspot search, and connect hotspot.
- b. **Sign in to webpages**: Open the browser, enter 192.168.11.202 (factory default) in the address bar, then to the login page. Click "No plug-in is installed, please download and install.", follow the prompts to install successfully. Log in with default username admin and password admin, then entering the preview page.

Note: If you forget your user name, password, IP address, Reset button: Long press Reset button for 5s. You can manually restore the factory default settings.

## Product Overview

### 1. Dimension



Pic2.1 Camera dimension

### 2. Accessory

When you unpack, please check the package containing the following items listed below :

	Item
Accessory	Power adapter 1pcs
	Antenna 1pcs
	Quick Installation Guide 1pcs

Table2.1 Accessories

### 3. Camera performance

The camera offers perfect functions, superior performance and versatile interfaces. The features include advanced ISP processing algorithms to provide vivid images with a strong sense of depth, high resolution and fantastic color rendition. It supports H.264/H.265 encoding which makes motion video fluent and clear even with less than ideal bandwidth conditions. Product works stable and reliable, and it is easy to use, installation and maintenance.

## 4 Technical specification

Camera Parameter	
Sensor	1/2.8 inch high quality HD CMOS sensor
Effective Pixels	2.07 million 16 : 9
Video Format	1080P30/25, 1080I60/50, 720P60/50
Optical Zoom	10x Optical Zoom f=4.7~47mm
View Angle	6.43°(narrow)~65°(wide)
Aperture	F1.6~F3.0
Digital Zoom	X10
Minimum Illumination	0.5Lux(F1.8, AGC ON)
DNR	2D&3D DNR
White Balance	Auto / Manual / One Push / 3000K / 3500K / 4000K / 4500K / 5000K / 5500K / 6000K / 6500K / 7000K
Exposure	Auto / Manual / Shutter priority / Aperture priority / Brightness priority
Focus	Auto / Manual
Iris	Auto / Manual
Electronic Shutter	Auto / Manual
BLC	ON / OFF
WDR	OFF/ Dynamic level adjustment
Video Adjustment	Brightness, Color, Saturation, Contrast, Sharpness, B/W mode, Gamma curve
SNR	>55dB
Input/Output Interface	
Video Interfaces	LAN \ WiFi
Image Code Stream	Dual stream output
Video Compression Format	H.265, H.264
Audio Input	Built-in microphone, with digital, omnidirectional, multi-angle orientation can be set.

Bluetooth Pairing	Built-in bluetooth, can be paired to external bluetooth microphone, to achieve bluetooth voice transmission.
IP Interface	100M IP port(100BASE-TX), WiFi
Network Protocol	RTSP, RTMP, ONVIF, GB / T28181
5 button	Zoom in / out, focus + / - , back to home (zoom back out, auto focus)
Power Interface	Micro USB interface (DC5V)
<b>Other Parameter</b>	
Supply Adapter	Input AC220V 50/60Hz, output DC5V/2A
Input Voltage	5V
Input Current	600~700mA
Battery-powered Time	≥4 hours
Working Voltage	Battery powered 3.7V ; Adapter powered 5V
Working Current	1A(Max)
Consumption	8.5W(Max)
Store Temperature	-10°C~+60°C
Store Humidity	20%~95%
Working Temperature	-10°C~+50°C
Working Humidity	20%~80%
Dimension (width*height*depth)	148mm X 65mm X 85mm(No antenna included)
Weight	710g
Working Environment	Indoor
Remote Operation (IP)	Remote Upgrade, Reboot and Reset
Accessory	Power adapter, Quick installation guide, Antenna

## Product Connection

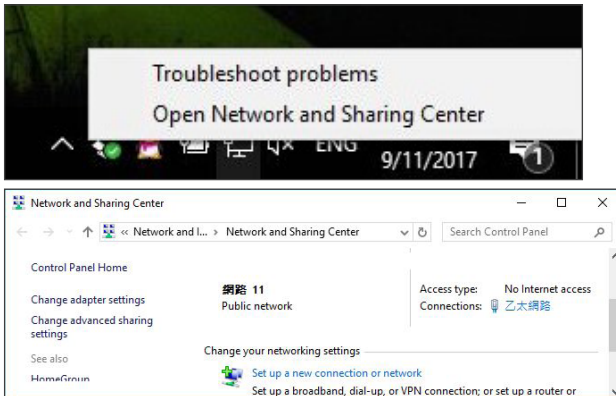
You can connect your camera to a PC or notebook with standard network cable and enter the management site via your Internet browser or connect your camera to a router or any DHCP server. See below for details.



### 1. Direct connection

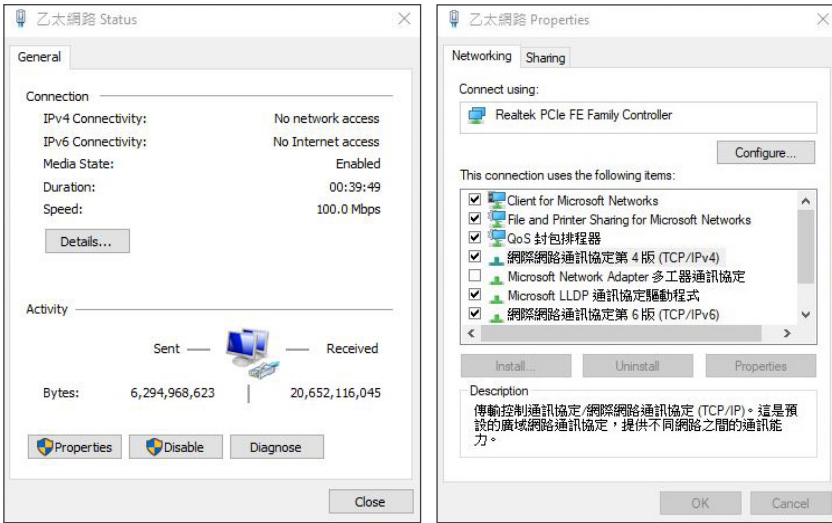
To access the camera for the first time, connect the camera and computer by network connecting cable. The computer must have the network segment where the camera IP address belong to. The device will not be accessible if without the segment. I.E. The camera default IP address is 192.168.11.202, then segment 11 must be added in the computer. Specific steps are as below:

- (a) Click "Open Network and Sharing Center".

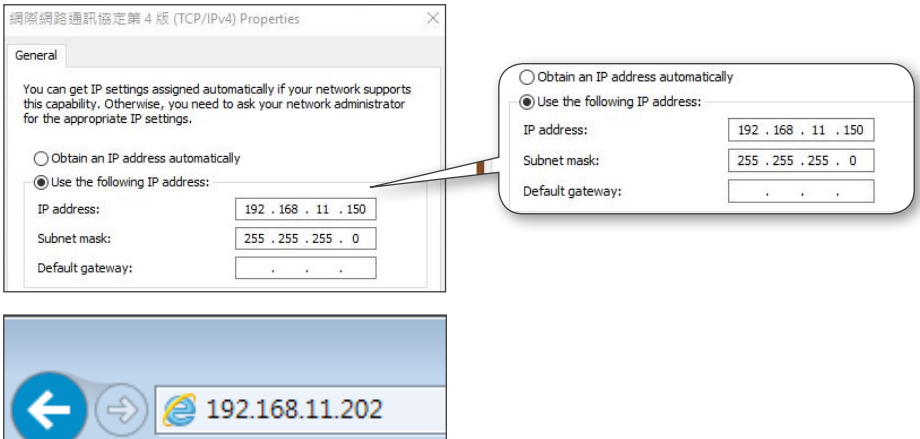




(b) Click the Properties button in Local Area Connection window and click the Internet Protocol Configuration (TCP/IPv4) option.




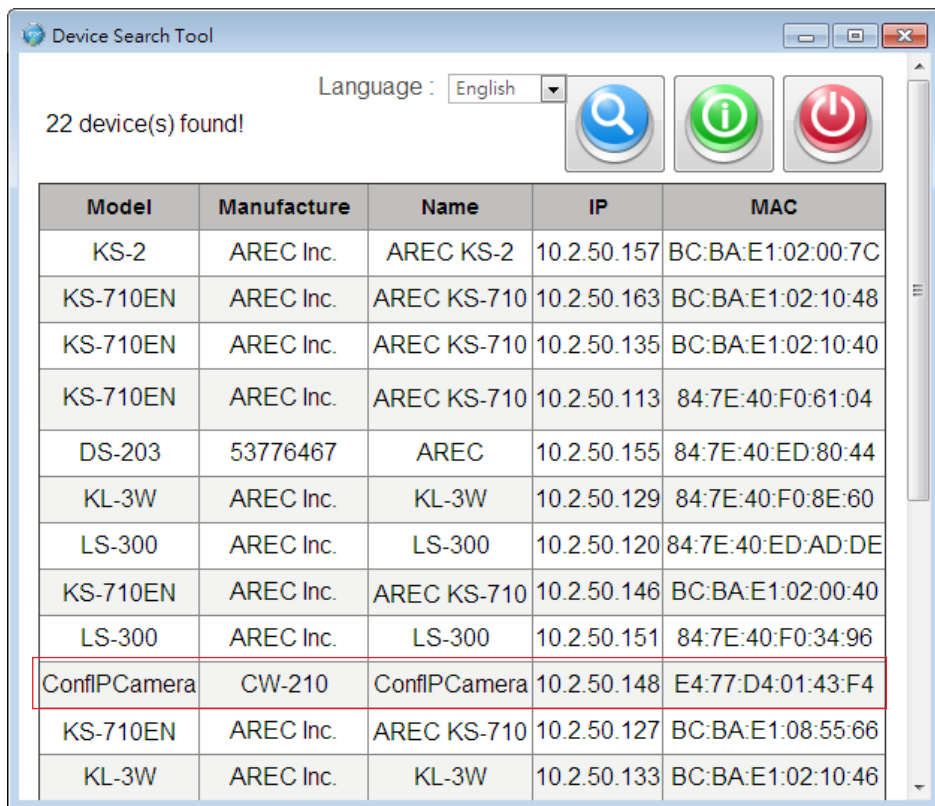
(c) Type IP : 192.168.11.1XX in "Use the following IP address:" field (Figure 1). Enter the static IP address of your CW-210: 192.168.11.202 in your browser's URL bar (Figure 2). The management login page displays. (Enter account ID and password admin/admin for the first time.)



## 2. Internet connection mode

IP is assigned by a router or any DHCP server. To log in to the administration web, please connect the CW-21 and your PC / Notebook to a router or a DHCP server. Follow below steps:

- Run the "Device Search Tool" utility, and click [  ] button.
- The tool should find the CW-210 and show detailed information. Double click on the founded camera.
- An access window will pop-up and ask for user name and password.(Enter account ID and password admin/admin for the first time.)



Note: To log in to the administration web by DHCP, please follow the Direct Connection mode to log in first and make the relevant settings. See "4.3.4 Network configure" for more details.

Note: Please do not put the power and network cable in places where can be easily touched to prevent video quality lowered by unstable signal transmission due to poor contact of cables.

## Overview of the Web Interface

**Web client:** Input the IP address 192.168.11.202 of the device in the address field of browser and click Enter button to enter into Web Client login page.

Note: Web access supported browsers: IE, 360 browser and other regular browser.



**Download / Install Plug in :** When first using IE browser to access the web conferencing camera, the login page will appear "Playback plug-in is not installed, please download and install!". Click on this message, download and install "MRWebXinstall.exe", according to information prompts.

**Language selection :** In login interface, the upper right corner shows "Chinese | English", click to select the web interface language.



Input the username and password after plug in installed. You can choose to log in as administrator or login in as normal user:

### (1) Login in as administrator:

The default user name and password are both "admin".

After log in successfully, enter Administrator webpages. Users can enter preview, playback, configuration and logout pages.

### (2) Login in as normal user:

The default user name and password are both "user1" or "user2".

After log in successfully, enter Administrator webpages. Users can enter preview, playback and logout pages.

Note: Normal user does not have permission to configuration page.

Menu	Description
Preview	Can control PTZ cameras, zoom, focus, snapshot, audio, fullscreen, local recording, SD card recording, preset settings, etc.
Playback	Can playback the video and picture files that are stored in local PC or SD card.
Configuration	Including Local configuration, audio configuration, video configuration, network configuration, system configuration, and so on. Note: The normal user login does not have configuration rights.
Logout	Log out of the management interface.

## 1. Preview

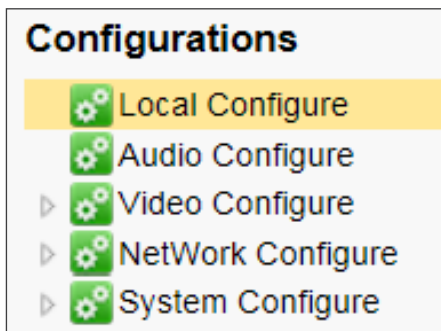
After log in successfully, enter Administrator webpages. By default, the page shows Preview interface. The device facilitate the users control PTZ cameras, zoom, focus, snapshot, audio, fullscreen, local recording, SD card recording ,preset settings, etc.



## 2. Configuration

Click Configuration to enter into the device parameters setting page.

Major options: Local configure, Audio configure, Video configure, Network configure and System configure. The detailed description refer to below sheet.



Menu	Explanation
Local configure	Including video stream preview mode, video packaging time, video file packaging type settings etc.
Audio configure	Including audio compressing format, sampling frequency, sampling precision, compressing code rate settings etc.
Video configure	Including video encoding, video parameters, character-overlapping, character size, video output setting etc.
Network configure	Including basic parameters, Ethernet, DNS, wireless network setting etc.
System configure	Including equipment property, system time, user management, version update, Reset, Reboot device settings etc.

## Network Configure - Ethernet parameters

	Preview	Playback	Configuration	Logout
<b>Configurations</b>				
Local Configure				
Audio Configure				
Video Configure				
Video Encode				
Stream Publish				
RTP Multicast				
Video Parameters				
Video OSD				
OSD Font Size				
Video Out				
NetWork Configure				
Network Port				
<b>Ethernet</b>				
WLAN				
DNS				
GB28181				
System Configure				
SystAttr				
SysTime				
SysUser				
Update				
Default				
Reboot				
<b>Ethernet</b>				
DHCP	<input type="checkbox"/>			
IP Address	<input type="text" value="192.168.11.202"/>			
Subnet Mask	<input type="text" value="255.255.255.0"/>			
Default Gateway	<input type="text" value="192.168.11.254"/>			
MAC Address	<input type="text" value="E4:77:D4:01:43:F4"/>			
	<input type="button" value="Save"/>			

1. **DHCP** :Set whether to open to obtain IP automatically. The machine will restart automatically after change(off by default)

2. **IP Address**: Set the IP address, the device will restart automatically after changes (default 192.168.11.202).

Note: Here is the IP address of the web page of the sign-in address

3. **Subnet Mask**: Set the subnet mask (default 255.255.5.0).

4. **Default Gateway**: Set the default gateway (default 192.168.11.254).

5. **MAC Address**: Set the physical address (the parameter is read-only but can not be modified).

Click on the "Save" button to display the "Save successfully" message, then the set is to take effect (Note: To prevent IP conflicts when modify ).

## Network Configure - WLAN

The screenshot shows a web-based configuration interface. On the left, a 'Configurations' sidebar lists various settings, with 'WLAN' selected. The main 'WLAN' section includes:
 

- Enable:** A checked checkbox.
- DHCP:** An unchecked checkbox.
- IP Address:** A text field containing '192.168.11.202'.
- Subnet Mask:** A text field containing '255.255.255.0'.
- Default Gateway:** A text field containing '192.168.11.254'.
- SSID:** A text field containing 'CBOX-WIFI'.
- Encryption:** A checked checkbox.
- Password:** A text field with masked characters '\*\*\*\*\*'.
- Save:** A button at the bottom of the form.

 On the right, the 'WiFi Hotspot' section displays a table of available hotspots:
 

	ESSID	Address	Quality
1	TP24_TEST	F4:F2:6D:93:DD:C3	100
2	140512080008	AC:22:0B:8D:42:56	100
3	HP-Print-OC-LaserJet 1102	F4:B7:E2:08:8B:0C	100
4	AREC_3F_24G	F8:1A:67:6D:98:56	100
5	HP-Print-FC-LaserJet 1102	7C:E9:D3:91:FE:FC	100
6	CBOX-WIFI	70:83:D5:13:40:8C	100
7	CBOX-WIFI	70:83:D5:13:40:94	96
8	SUN235	BB:A3:86:5F:71:74	91
9	ProtobleWRT	F0:B4:29:6E:1C:53	86
10	QA_wifi	88:25:93:93:8C:EB	65

 Below the table are navigation controls including a search bar, a 'Link' button, and pagination information: 'Page 1 of 2', 'Displaying 1 to 10 of 15 items'.

### (a) WLAN Settings

**Enable:** Set whether to enable WLAN, set the following settings after checked.

**DHCP :** Set whether to open to obtain IP automatically. The machine will restart automatically after change.

**IP Address:** Set WiFi IP (default 192.168.11.202. If DHCP is checked, it is automatically assigned).

**Subnet Mask:** Set the wireless IP subnet mask (default 255.255.255.0).

**Default Gateway:** Set the wireless IP default gateway (default 192.168.11.254).

**SSID:** Automatically generated the connection wifi account after connected to the wifi hotspot (default CBOX-WIFI).

**Encryption:** Automatically checked after connected to the wifi hotspot.

**Password:** Automatically generated the connection wifi password after connected to the wifi hotspot (default 12345678).

Click on the "Save" button to display the "Save successfully" message, then the set is to take effect.

Note: After the wireless WiFi connection is successful, configure the SSID and password automatically; please save it.

### (b) WiFi Hotspot

Click "Search" button to search for the WiFi hotspot.

After search the WiFi hotspot, double click to pop out the dialog, enter password and connect the WiFi. display " Connect successfully" message, then connection is done.

### (c) Wireless WiFi web page log in

If you have not checked DHCP (obtain IP automatically) above, please open the browser and input wireless IP address (default 192.168.11.202), press Enter to log in.

If you have checked DHCP above, the specific IP address needs to log in to the user router or switch settings interface to view the assigned IP.



---

AREC Inc.© All Rights Reserved 2017. | [www.arec.com](http://www.arec.com)  
All information contained in this document is Proprietary



Made in Taiwan  
Date : 2017.09.01  
Version: 2.3.1

AREC have the right to change or improve product specifications, without obligation to notify any user.  
Go to [www.arec.com](http://www.arec.com) get the latest information related to the product or additional information.